

# Populus nigra var italica



T11399 Populus nigra italica  
distance from south



T11399 Populus nigra italica



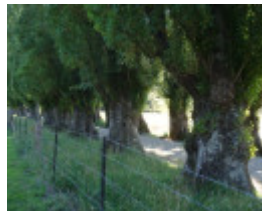
T11399 Populus nigra italica



T11399 Populus nigra italica



T11399 Populus nigra italica



T11399 Populus nigra italica  
trunks



T11399 Populus nigra italica  
distance from south



T11399 Populus nigra italica



T11399 Populus nigra italica



T11399 Populus nigra italica



T11399 Populus nigra italica



T11399 Populus nigra italica



T11399 Populus nigra italica



T11399 Populus nigra italica



T11399 Populus nigra italica



T11399 Populus nigra italica



T11399 Populus nigra italica



T11399 Populus nigra italica

---

## Location

Morses Creek Road,, WANDILIGONG VIC 3744 - Property No T11399

## Municipality

ALPINE SHIRE

## Level of significance

State

## Heritage Listing

National Trust

---

## Statement of Significance

Last updated on - June 16, 2008

Contribution to landscape

This double row of trees was planned as an avenue driveway by the E C Dyason family to lead to a proposed new home on their property. The poplars were planted between 1931 and 1932 but the new house was never built and only the trees survive. The avenue exhibits a regimental splendour unparalleled in Wandiligong. The Lombardy Poplar is native to north-western Africa and Europe and is widely naturalised in Australia. It is now regarded as an environmental weed in the ACT, New South Wales, Victoria, South Australia.

Measurements: 04/12/1995

Spread (m): 7

Girth (m): 3

Height (m): 43

Estimated Age (yrs): 65  
Condition: Good

Measurements:06/01/2011  
Spread (m): E-W 5; N-S 7  
Girth (m): 3  
Height (m): 40  
Condition: Good

Access: Restricted  
Classified: 14/12/1995

Other Names Lombardy Poplar,

Hermes Number 70899

Property Number

---

*This place/object may be included in the Victorian Heritage Register pursuant to the Heritage Act 2017. Check the Victorian Heritage Database, selecting 'Heritage Victoria' as the place source.*

*For further details about Heritage Overlay places, contact the relevant local council or go to Planning Schemes Online <http://planningschemes.dpcd.vic.gov.au/>*