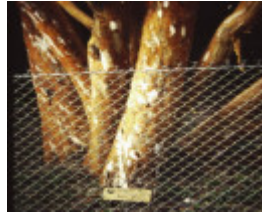

Luma apiculata



T11647 Luma apiculata



T11647 Luma apiculata



T11647 Luma apiculata



T11647 Luma apiculata



T11647 Luma apiculata

Location

'Crana', 5 Sangsters Road, MOUNT MACEDON VIC 3441 - Property No T11647

Municipality

MACEDON RANGES SHIRE

Level of significance

State

Heritage Listing

National Trust

Statement of Significance

Last updated on - June 15, 2004

Rare or Localised: 10-50 known specimens;
Outstanding Size: height x circumference x spread;

Aesthetic Value

Notable for its attractive golden-brown bark, this tree is multi-trunked, the largest being 1.5m in circumference. The finest and largest example known at Mt Macedon.

Measurements:

Spread (m): 9.3

Girth (m):

Height (m):

Estimated Age (yrs):

Condition: Good

Access: Restricted

Other Names Temu,

Hermes Number 71145

Property Number

This place/object may be included in the Victorian Heritage Register pursuant to the Heritage Act 2017. Check the Victorian Heritage Database, selecting 'Heritage Victoria' as the place source.

For further details about Heritage Overlay places, contact the relevant local council or go to Planning Schemes Online <http://planningschemes.dpcd.vic.gov.au/>