

## Nothofagus moorei



T12003 Nothofagus moorei



T12003 Nothofagus moorei



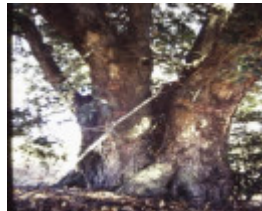
T12003 Nothofagus moorei



T12003 Nothofagus moorei



T12003 Nothofagus moorei



T12003 Nothofagus moorei



T12003 Nothofagus moorei



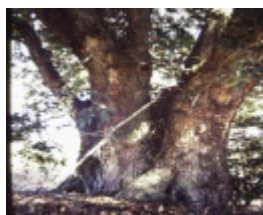
T12003 Nothofagus moorei



T12003 Nothofagus moorei



T12003 Nothofagus moorei



T12003 Nothofagus moorei



T12003 Nothofagus moorei

### Location

Woodend Cemetery, East Street, WOODEND VIC 3442 - Property No T12003

### Municipality

## Level of significance

State

## Heritage Listing

National Trust

---

## Statement of Significance

Last updated on - July 2, 2004

Contribution to historic cemetery  
Rare or localised

Located halfway along the central path between Clark and Ogger headstones, this tree is a fine example of a species not commonly cultivated in Victoria. A native of Queensland, it is a dominant species in cool-temperate rainforests up to 1550m altitude, from Barrington Tops to the McPherson Ranges. The timber was of commercial value but it is now rare and protected in National Parks. This tree has a dense well-developed crown and multi-branched structure. The only other known example of the species occurs in the Royal Botanic Gardens, but has not grown to the size or form of the Woodend specimen.

Measurements: 06/05/1994  
Spread (m): 9.8  
Girth (m): 3.2 at 0.7m  
Height (m): 14.5  
Estimated Age (yrs): 80  
Condition: Good

Access: Unrestricted  
Classified: 08/09/1994

Other Names      Antarctic Beech,

Hermes Number    71504

Property Number

---

*This place/object may be included in the Victorian Heritage Register pursuant to the Heritage Act 2017. Check the Victorian Heritage Database, selecting 'Heritage Victoria' as the place source.*

*For further details about Heritage Overlay places, contact the relevant local council or go to Planning Schemes Online <http://planningschemes.dpcd.vic.gov.au/>*