
Callitris glaucophylla



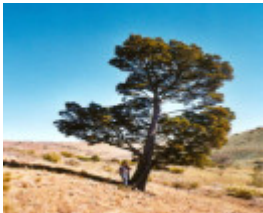
T12041 Callitris glaucophylla



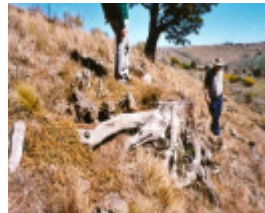
T12041 Callitris glaucophylla



T12041 Callitris glaucophylla



T12041 Callitris glaucophylla



T12041 Callitris glaucophylla
stump

Location

Calder Hwy and Sydenham Park, KEILOR NORTH VIC 3036 - Property No T12041

Municipality

BRIMBANK CITY

Level of significance

Regional

Heritage Listing

National Trust

Statement of Significance

Last updated on - June 16, 2008

Remnant native vegetation
End of natural range

Contribution to landscape.

These are a group of five trees plus regeneration in a location well outside the normal range of natural distribution, the closest point being well north of the Great Divide and Bendigo. There are 2 pairs of trees and a single tree located separately within fenced off areas. All five trees are in good health despite two being deformed. Other well established trees in the Organ Pipes National Park were propagated from seed collected from these trees. There are also trees in Werribee Gorge and elsewhere along the Maribyrnong River . There are no foreseeable threats to these five , which are being actively managed and protected in a revegetation program by Brimbank City Council. The five trees are the best and oldest examples in Maribyrnong River Catchment.

Measurements: 12/09/2002

Spread (m): 7.3

Girth (m): 2.35

Height (m): 13.4

Estimated Age (yrs): 135

Condition: Good

Access: Restricted

Classified: 11/12/2002

Other Names White Cypress Pine,

Hermes Number 71542

Property Number

This place/object may be included in the Victorian Heritage Register pursuant to the Heritage Act 2017. Check the Victorian Heritage Database, selecting 'Heritage Victoria' as the place source.

For further details about Heritage Overlay places, contact the relevant local council or go to Planning Schemes Online <http://planningschemes.dpcd.vic.gov.au/>