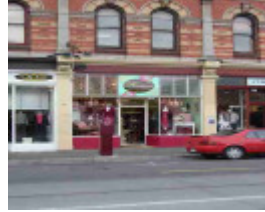


---

## 248 Brunswick Street



236-252 Brunswick Street



248 Brunswick Street



236-252 Brunswick Street



236-252 Brunswick Street

---

### Location

248 Brunswick Street, FITZROY VIC 3065 - Property No 332930

### Municipality

YARRA CITY

### Level of significance

Registered

### Victorian Heritage Register (VHR) Number

H0559

### Heritage Overlay Numbers

HO155

### Heritage Listing

Yarra City

---

## Statement of Significance

Last updated on - September 6, 2008

This property is on the Victorian Heritage Register - H559.

For more information on this property, refer to the Victorian Heritage Register information.

Heritage Study/Consultant	Yarra - South Fitzroy Conservation Study, Jacobs Lewis Vines, 1979; Yarra - Fitzroy Urban Conservation Study, Allom Lovell & Associates, 1992; Yarra - City of Yarra Heritage Review, Allom Lovell & Associates, 1998; Yarra - City of Yarra Review of Heritage Overlay Areas, Graeme Butler & Associates, 2007;
Construction dates	1888,
Other Names	Shop & Residence,
Hermes Number	95015
Property Number	

---

## Physical Description 2

part 236-252; original or early shopfront; RNE; Beswicke - A; MMBW Detail Plan shows with verandah;

## Integrity

High

*This place/object may be included in the Victorian Heritage Register pursuant to the Heritage Act 2017. Check the Victorian Heritage Database, selecting 'Heritage Victoria' as the place source.*

*For further details about Heritage Overlay places, contact the relevant local council or go to Planning Schemes Online <http://planningschemes.dpcd.vic.gov.au/>*