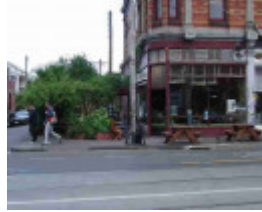

252 Brunswick Street



236-252 Brunswick Street



252 Brunswick Street



252 Brunswick Street



236-252 Brunswick Street



236-252 Brunswick Street

Location

252 Brunswick Street, FITZROY VIC 3065 - Property No 252610

Municipality

YARRA CITY

Level of significance

Registered

Victorian Heritage Register (VHR) Number

H0559

Heritage Overlay Numbers

HO155

Heritage Listing

Yarra City

Statement of Significance

Last updated on - September 6, 2008

This property is on the Victorian Heritage Register - H559.

For more information on this property, refer to the Victorian Heritage Register information.

| | |
|---------------------------|--|
| Heritage Study/Consultant | Yarra - South Fitzroy Conservation Study, Jacobs Lewis Vines, 1979; Yarra - Fitzroy Urban Conservation Study, Allom Lovell & Associates, 1992; Yarra - City of Yarra Heritage Review, Allom Lovell & Associates, 1998; Yarra - City of Yarra Review of Heritage Overlay Areas, Graeme Butler & Associates, 2007; |
| Construction dates | 1888, |
| Other Names | Shop & Residence, |
| Hermes Number | 95018 |
| Property Number | |

Physical Description 2

part 236-252; original or early shopfront; RNE; Beswicke - A; corner site; MMBW Detail Plan shows with verandah;

Integrity

High

This place/object may be included in the Victorian Heritage Register pursuant to the Heritage Act 2017. Check the Victorian Heritage Database, selecting 'Heritage Victoria' as the place source.

For further details about Heritage Overlay places, contact the relevant local council or go to Planning Schemes Online <http://planningschemes.dpcd.vic.gov.au/>