

Victorian Heritage Database Report

Report generated on - 17/08/24

SS CONSIDE



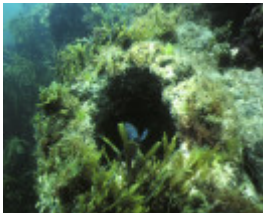
S140 Conside
PortPhillipHeadsLonsdale
LookingNorth Feb1997



S140 Conside
PortPhillipHeadsLonsdale
Engine Feb1997



S140 Conside
PortPhillipHeadsLonsdale
LookingSouth Feb1997



S140 Conside
PortPhillipHeadsLonsdale
TopView Feb1997

Location

Lonsdale Reef, Port Phillip Heads

Victorian Heritage Register (VHR) Number

S140

Date lost

15/09/1852

Construction material

Iron

Hull

Iron

Propulsion

Steam - Screw

Engine specification

80HP. Geared oscillating engine. See site file for report on engine

Engine builder

Thomas Dunn Marshall

Length/Breadth/Depth

105.50 Feet / 26.90 Feet / 16.60 Feet

Builder

T.D. Marshall

Year of construction

1848

Built port

South Shields

Built country

England

Date lost

15/09/1852

Departure

Sydney

Destination

Melbourne

Cargo

Specie; hardware, wine, general (value 4,000 pounds). 12 bags of maize, case apparel, wheelbarrow, . 20 cases of champagne, horse, case boots, 2 packages of cloth, 4 hogsheads, 3 half-pipes , 4 quarter casks wine, 4 boxes of eggs, 8 packages of shoes, 2 cases of hardware, case hats, 3 bales, 4 cases...woollens, 3 cases cottons, 15 casks of butter, 3 casks oranges, 2 packages iron, 12 casks beef, 21 bales woollens, 2 cases bacon (UID 72)

Owner

Joseph Clay, South Shields

Master

Capt. Appleby

Weather conditions

Clear night; wind: S; force 3; flood tide Thick and squally Thick; fresh NW breeze

Cause of loss

Mistook warning light from crew of the Portland, wrecked on Lonsdale Reef an hour beforehand, for Shortland Bluff light

Passenger comments

13 cabin, 136 steerage. "Messrs J. D'Arcy, A. Deought, W. Jarvis, Sloman.." (UID 72)

Number of crew

21

Statement of significance

<p>The Consider is historically significant for being the earliest screw steamer wreck in Victoria, was the first purpose built steam collier, was the first screw steamer to travel between Sydney and Melbourne, and is likely to have been the first steamship across the Pacific. It is archaeologically and technically significant for the remains of its early geared oscillating steam engine.</p>

VHR history

Delayed on passage from Sydney by strong winds, short of provisions and anxious to make port. Was misled on approaches to Port Phillip by lights of 'Portland' , stranded an hour earlier. Panic by some passengers in launching boats caused some deaths. Some looting by other passengers. Captain and some others deliberately destroyed all wine and spirits to prevent further trouble. Second officer sent by boat on dangerous expedition to raise alarm, reached pilot station. Rescue of those remaining on board by pilots at daylight. (ID 9, 71, 72) Warnings from Portland to Consider apparently not heard. Wreck reported as lying on extreme SW point of Lonsdale Reef (ID 71) . Not in Lloyd's. Built for Hamburg trade. Arrived Sydney 1852, after being advertised in November 1851 in San Francisco for Australian voyage. First screw steamer to ply between Sydney and Melbourne. Vessel insured in England, large part of cargo probably uninsured. Pemberton (ID 10) claims the vessel was 'American' - presumably American-owned in 1851 when in San Francisco.
 Precedes Monumental City's trans-Pacific voyage by 14 months - First Steamer across the Pacific?
 Incorrectly reported by Williams (ID 3) and Loney (ID 1) to have been lost at Pt Nepean. Newspapers and Ports and Harbours Register reported wrecking at Pt Lonsdale. Location of a geared oscillating steam engine reported on SE corner of outer reef Pt Lonsdale confirmed to be CONSIDER.