

Victorian Heritage Database Report

Report generated on - 18/08/24

COURIER



S146 Courier
ShipsGraveyardBarwonHeads
SternDetail Mar1990 WC



S146 Courier
ShipsGraveyardBarwonHeads
Boiler Mar1990 WC



S146 Courier
ShipsGraveyardBarwonHeads
BowFrontView Mar1990 WC



S146 Courier
ShipsGraveyardBarwonHeads
BowSideView Mar1990 WC



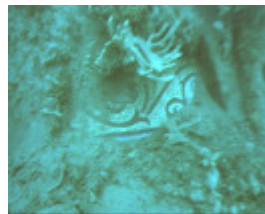
S146 Courier
ShipsGraveyardBarwonHeads
BowStarboardSide Mar1990
WC



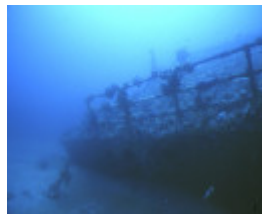
S146 Courier
ShipsGraveyardBarwonHeads
FrontView Mar1990 WC



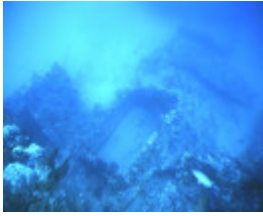
S146 Courier
ShipsGraveyardBarwonHeads
PropellorApperture Mar1990
WC



S146 Courier
ShipsGraveyardBarwonHeads
Floor Mar1990 WC



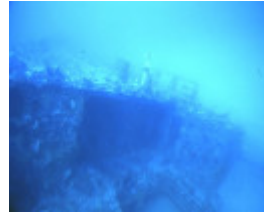
S146 Courier
ShipsGraveyardBarwonHeads
Railing Mar1990 WC



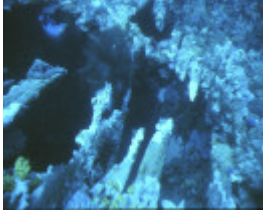
S146 Courier
ShipsGraveyardBarwonHeads
ForHatch Mar1990 WC



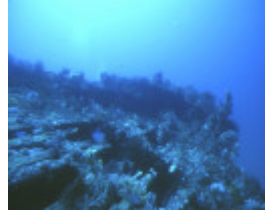
S146 Courier
ShipsGraveyardBarwonHeads
Rear Mar1990 WC



S146 Courier
ShipsGraveyardBarwonHeads
ForecastleBulkhead Mar1990
WC



S146 Courier
ShipsGraveyardBarwonHeads
ForecastleDeckDetail
Mar1990 WC



S146 Courier
ShipsGraveyardBarwonHeads
ForecastleDeckView
Mar1990 WC



S146 Courier
ShipsGraveyardBarwonHeads
FrameDetail Mar1990 WC

Location

Ships Graveyard, Outside Port Phillip Heads Area, Bass Strait

Victorian Heritage Register (VHR) Number

S146

Date lost

29/03/1928

Official number

95231

Construction material

Steel

Hull

Sluice openings in stern, well deck; one deck. Quarterdeck 140',
 Forecastle 37". One deck and break, elliptical stern, clincher built.

Propulsion

Steam - Screw

Engine specification

320 HP engines triple 3 cyl/ 70", 4.6" x73"

Length/Breadth/Depth

220.80 Feet / 30.00 Feet / 12.60 Feet

Builder

C.S. Swan & Hunter

Year of construction

1887

Built port

Newcastle-on-Tyne

Built country

England

Registration Number

No. 24 of 1887

Registration Port

Melbourne

Date lost

29/03/1928

Owner

Huddart Parker Ltd

Master

Capt. G. Bates

Cause of loss

Dismantled and scuttled

VHR history

The SS Courier was built for Huddart Parker Ltd for the Port Phillip excursion trade. It was also built as an armed auxiliary of the Victorian Navy. After 40 years carrying passengers on the bay, it was stripped of fittings and scuttled in the Ships' Graveyard.