

Victorian Heritage Database Report

Report generated on - 28/09/24

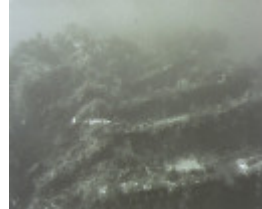
ALBERT WILLIAM



S15AlbertWilliam_PointGellibra
unknown



S15AlbertWilliam_PointGellibra
unknown



S15AlbertWilliam_PointGellibra
unknown

Location

Port Phillip Bay, Point Gellibrand

Victorian Heritage Register (VHR) Number

S15

Date lost

18/05/1955

Official number

47480

Construction material

Iron

Hull

1 deck and a break, 3 masts, elliptic stern, clinker built, shield head, iron framework.

Propulsion

Sail

Number of masts

3

Length/Breadth/Depth

162.50 Feet / 26.00 Feet / 17.30 Feet

Builder

James Laing UID: 102

Year of construction

1863

Built port

Sunderland, UK UID: 102

Built country

England

Registration Number

13 of 1933

Registration Port

Melbourne

Date lost

18/05/1955

Departure

Melbourne

Destination

Geelong

Cargo

Wool lighter. Empty - used as a home.

Owner

Victorian Lighterage Pty Ltd, 54 William St, Melbourne

Weather conditions

SW gale; 50 knots - freak storm

Cause of loss

Totally wrecked while under tow when cable parted from tug Swiftness. Thrown against a reef off Point Gellibrand (UID 9)

Number of crew

2

Crew comments

A married couple: Hugh and Anne Bennett were living on the lighter with their dog Pixie.
 UID 9, 152

VHR history

Hugh and Anne Bennett had been living on the empty wool-lighter for a few months and lost all their possessions. With their dog they spent a gruelling 28 hours on board after stranding, before being taken off. Crane broke off in gale, nearly capsizing the lighter. Army engineers blasted the remains on 18 August 1961. The mast was hauled away as scrap. Had been partially broken up earlier. Ex barque.