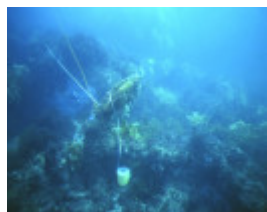


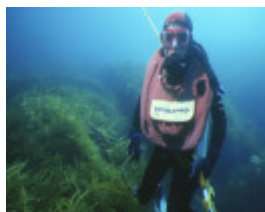
# Victorian Heritage Database Report

Report generated on - 27/04/24

## LUNE



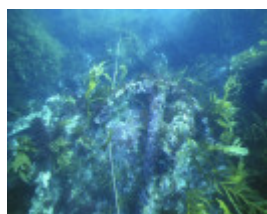
S421 Lune  
WilsonsPromontory  
CliffyIsland Measuring



S421 Lune  
WilsonsPromontory  
CliffyIsland Diver



S421 Lune  
WilsonsPromontory  
CliffyIsland  
SideViewWithDiver



S421 Lune  
WilsonsPromontory  
CliffyIsland SiteView

### Location

Cliffy Island, east of Wilsons Promontory

### Victorian Heritage Register (VHR) Number

S421

### Date lost

17/02/1885

### Official number

unknown

### Construction material

Wood

## Hull

Sheathed with felt & yellow metal. Part iron bolts, salted. Part old materials.

## Propulsion

Sail

## Number of masts

3

## Length/Breadth/Depth

137.00 Feet / 27.00 Feet / 18.30 Feet

## Builder

Simpson

## Year of construction

1874

## Built port

Glassom Dock

## Built country

England

## Registration Port

Helsingborg

## Date lost

17/02/1885

## Departure

Newcastle

## Destination

Batavia, via Melbourne

## Cargo

750 tons of Coal

## Owner

C. Henckel

## **Master**

Captain J. Malmberg

## **Cause of loss**

Ran ashore and was destroyed by heavy seas

## **Number of crew**

9

## **VHR history**

The wooden barque Lune was carrying 750 tons of coal from Newcastle, NSW to Batavia, Dutch East Indies via Melbourne, Vic. Off Cape Howe the barque struck West to SW gale force winds and a heavy sea. When the gale subsided the vessel was left in a heavy swell and later a thick fog settled down. At 1.30 am on 17 February 1885 the barque struck the reef on the east side of Clifty Island. Rudder, stern post and steering gear were lost and the boats were lowered and the crew escaped. The vessel struck heavily on the reef, breaking up and then sinking.<br /> The crew then went ashore on Clifty Island and were looked after by the people at the Lighthouse station there. The vessel was only partially insured and the cargo was not insured.