

# Victorian Heritage Database Report

Report generated on - 19/07/24

---

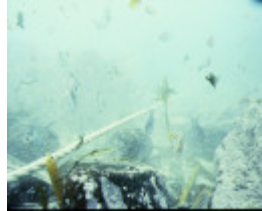
## LYDIA



S422 Lydia PortFairy  
PortRibs



S422 Lydia PortFairy Detail



S422 Lydia PortFairy  
Measuring



S422 Lydia PortFairy  
WreckSite

---

### Location

Port Fairy

### Victorian Heritage Register (VHR) Number

S422

### Date lost

02/02/1847

### Number of masts

3

### Length/Breadth/Depth

0.00 / 0.00 / 0.00

### Year of construction

1825

**Built port**

Liverpool

**Built country**

England

**Registration Port**

Liverpool

**Date lost**

02/02/1847

**Departure**

Sydney

**Destination**

London, via Port Fairy

**Cargo**

Ballast

**Owner**

P. Petrie and Co or A Petrie

**Master**

Captain P. Petrie

**Cause of loss**

Ran ashore after damage from grounding

**VHR history**

When the barque Lydia arrived at Port Fairy from London, the anchors were dropped in eighteen feet of water, although the vessel was drawing thirteen feet. As the tide began to fall, the Lydia started to strike the bottom in the swell. The stern post was driven up and the vessel began to take water rapidly. To prevent his ship from sinking, the master slipped the anchor cables and ran the Lydia ashore. Although the cargo was saved, the vessel was a total wreck.<br /> <br /> Vessel a brig 1826-1842 4repairs 1844-45. Coppered 1828, 1835 sheathed in felt and yellow metal 1844, iron knees, 2 iron cables, 1 hemp cable. Her hull was later broken up for materials to build another vessel. Weather: SE force 6.