

Victorian Heritage Database Report

Report generated on - 02/10/24

MARIE



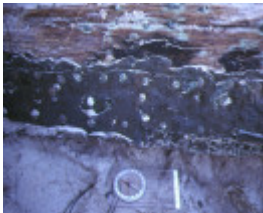
S447 MarieCape Bridgewater
WoodenBeam



S447 MarieCape Bridgewater
Memorial



S447 MarieCape Bridgewater
SiteView



S447 MarieCape Bridgewater
WoodDetail

Location

Cape Bridgewater

Victorian Heritage Register (VHR) Number

S447

Date lost

09/1851

Construction material

Wood

Hull

According to Mackenzie parts of the hull washed up were pitch pine planks fastened with pine treenails. Newspapers reported the remains washed up were copper sheathed and fastened, part iron bolt, iron knees. Oak and white pine with white pine treenails.

Propulsion

Sail

Number of masts

3

Length/Breadth/Depth

0.00 Feet / 0.00 Feet / 0.00 Feet

Date lost

09/1851

Departure

Antwerp

Destination

Adelaide and Sydney

Cargo

Original cargo as well as 304 bags of Adelaide flour.

Owner

Belgium or German

Master

Captain Rathje

Weather conditions

wild south-westerly gales

Cause of loss

Locals thought the vessel struck near the Blow Holes

Passenger comments

11 passengers including the Belgian Consul and staff

Number of crew

14

VHR history

Wreckage came ashore between Cape Otway and Apollo Bay. The German barque carried 25 passengers and crew, including the Belgian Consul and his staff. Almost a month had passed before reports circulated through the district and back to the main ports that a vessel had been lost on a wild section of coastline about 12 miles west of Portland. A party from the Mount Gambier district searched the coastline and recovered a large quantity of cargo and wreckage which lay scattered over more than 30 miles. Six badly mutilated bodies were subsequently washed ashore, followed by three more a few days later, while large sections of the vessel washed up weeks later at Cape Otway and Apollo Bay. Settlers near the scene of the wreck stated that they had seen a barque beat out of Bridgewater Bay during the heavy gale in September and that night gunfire was heard out to sea. In all 36 bodies were washed ashore and buried. Weather: S force 10. Extensive wreckage came ashore at Bridgewater Bay in late September 1851, including beams, planking, side of a ship's hull, masts and spars, clothes, personal effects, a small ship's boat, an ornate cassock (priests), harp and flag. An investigation and search revealed some wreckage from a sailing vessel at Cape Bridgewater. Further searches found six badly mutilated bodies ashore at Whites Beach and another 3 further along Discovery Bay. A subsequent investigation found that the barque MARIE had sailed from Port Adelaide early in September and had not been heard of since. Among the material found ashore was a Hamburg flag. Stockmen mustering cattle along Discovery Bay saw a ship close in, battling with a wild south-westerly gale possibly a barque close into shore on the evening of 18 September. The weather at this time was extreme with gale force winds from the S.W. In 1930, local residents at Cape Bridgewater erected a cairn at Whites Beach.