

Victorian Heritage Database Report

Report generated on - 02/10/24

MIRANDA



S470 Miranda WilsonsProm
BeforeExcavation 1986



S470 Miranda WilsonsProm
AfterExcavation 1986



S470 Miranda WilsonsProm
ExposedFrame 1986



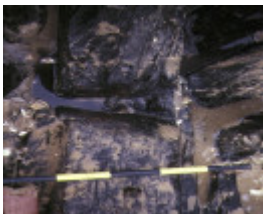
S470 Miranda WilsonsProm
BeachView 1986



S470 Miranda WilsonsProm
BeginningDig 1986



S470 Miranda WilsonsProm
ExposedFront 1986



S470 Miranda WilsonsProm
WoodDetail 1986

Location

Miranda Bay, Wilsons Promontory

Victorian Heritage Register (VHR) Number

S470

Date lost

07/08/1852

Official number

none

Construction material

Wood

Propulsion

Sail

Engine specification

N/A

Engine builder

N/A

Number of masts

2

Length/Breadth/Depth

76.10 Feet / 20.60 Feet / 11.30 Feet

Builder

John Watson

Year of construction

1846

Built port

Hobart, Tasmania

Built country

Australia

Registration Number

38 of 1846

Registration Port

Hobart

Date lost

07/08/1852

Departure

Hobart

Destination

Port Albert

Cargo

Hull: Copper sheathed and fastened (232)
General cargo and building materials from Hobart & Launceston, Tas, to Port Albert and livestock from Port Albert to Tas.

Owner

Capt. Godfrey Vaughan Bentley and John Reeve

Master

Captain George Bentley (2 & 8)

Weather conditions

Weather SE force 10 clear

Cause of loss

At anchor when driven ashore by gale conditions. Burnt on beach.

Statement of significance

The Miranda is significant as an example of an Australian built cargo ship working in the Bass Strait trade.

VHR history

The wooden brigantine Miranda was a regular Bass Strait trader from Hobart and Launceston to Port Albert. It carried general cargo and building material to Port Albert and livestock to Tasmania. The vessel anchored in the shelter of Rabbit Island on a voyage from Hobart to Port Albert in August 1852. A strong south easterly caused the vessel to part from both anchors, and it went ashore in a cove on Wilson's Promontory that now bears its name. No lives were lost, but the vessel was subsequently condemned, and burnt on the beach where it lay.